

In-skid fuel day tank

CO24

> Specification sheet



Our energy working for you.™

Description

In-skid fuel day tanks are designed to fit within the confines of the generator set skid rails and provides a minimum of 1-2 hours of operation at 60 Hz full load standby rating. Cummins Power Generation in-skid fuel day tanks are constructed of aluminized steel which provides the corrosion resistance of aluminum with the inherent strength of steel. Production tanks are leak tested to 5 psi, exceeding minimum testing requirements established by UL.

Features

- Pump control** - Automatic
- Float switch** - 5-level magnetic reed type
- Fuel pump motor** - 1/4 HP, reconnectable to 120 or 240 VAC
- Manual fill cap**
- Mounting** - Directly to generator set skid
- Visual leak detection** - Tank to foundation ground clearance
- 50/60 Hz Compatible**
- Construction** - 14 gauge aluminized steel (tanks larger than 12 gallon), continuous welded seams
- Options:**
 - Rupture basin
 - Rupture basin alarm
 - Manual fuel gauge
 - Fuel solenoid valve
- UL Listed** - File # MH 16055

Model	Feature option C024 24 VDC (see note 1)	Feature option C024 120/240 VAC (see note 2)	Fuel capacity Gal (L)
DFAB, DFAC	0415-0741	415-0745	19.3 (73.38)
DFCB, DFCC, DFCE, DFBF	N/A	415-0825	25.7 (97.3)
DFEB, DFEC	0415-0638	415-0639	49.0 (183.75)
DQAD, DQAE, DQAF	0415-0741	415-0745	19.3 (73.38)

1. Day tank equipped with pump and control. Control logic operates on 24 VDC supplies by generator set batteries (instruction sheet G-068).
2. Day tank equipped with pump and control. Control operates on 120 VAC or 240 VAC. A transformer supplied in the control provides 24 VDC to the control logic (instruction sheet G-068).

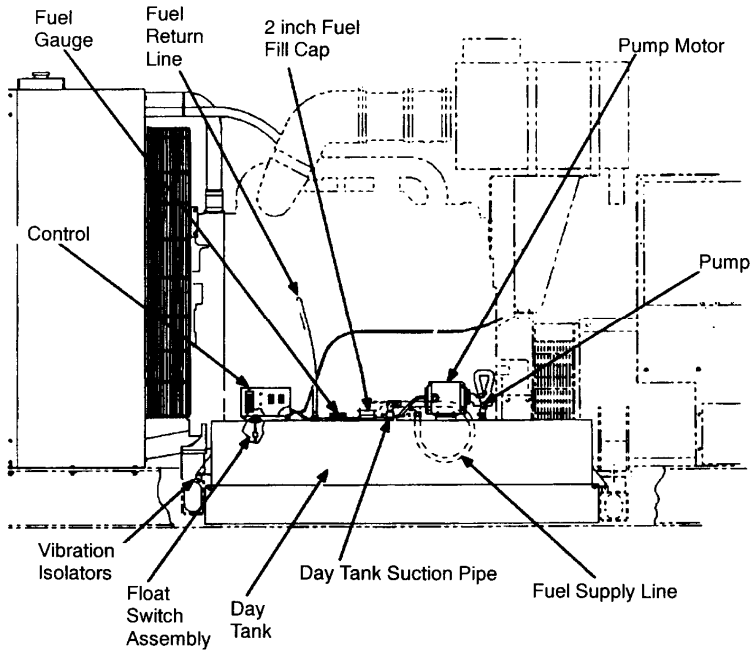


Figure 1 - Typical in-skid fuel day tank (400-500 kW DF series)

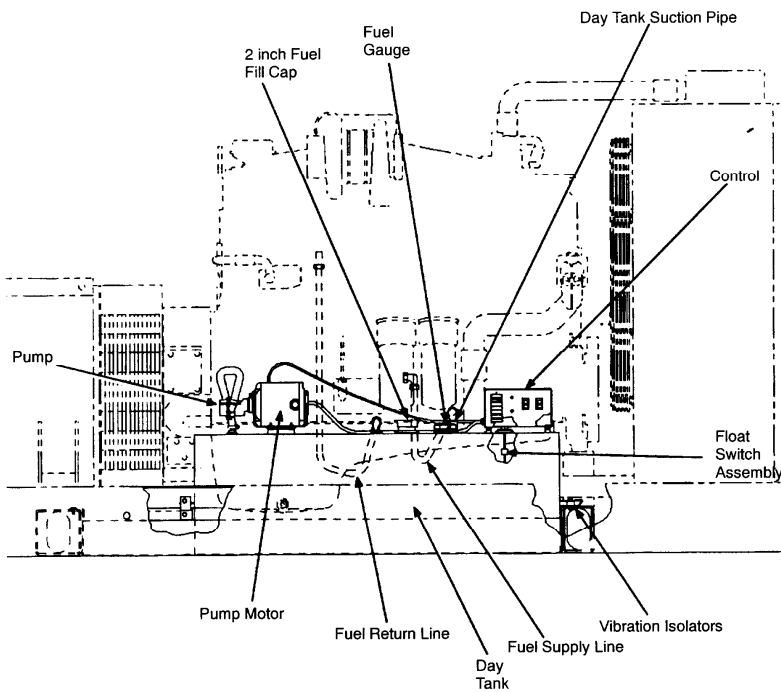


Figure 2 - Typical in-skid fuel day tank (200-350 kW DF series)

Options

Mechanical fuel gauge	Part number
DFAB, DFAC	0415-0565-15
DFCB, DFCE, DFBF, DFCC	0415-0565-05
DFEB, DFFB	0415-0565-02
DQAD, DQAE, DQAF	0415-0565-02

Solenoid valve

307-2703 – Used as a positive fuel shut-off on the float valve day tank when fuel is being supplied from an overhead tank - 24 VDC (normally closed), 3/8 NPT female inlet and outlet, UL Listed.

Our energy working for you.™

www.cumminspower.com

Rupture basin kits for in-skid day tanks

The rupture basin is a containment tank that collects fuel that may overflow from the day tank either due to a leak at the float switch or a fracture in the tank itself. The optional basin alarm switch, when wired into the day tank pump control, will provide indication of leakage. The basin is sized to a minimum 150% of the day tank capacity.

Note: Installation of an in-skid day tank and/or rupture basin will restrict stub-up area between the generator set cross-member supports.

Model	Rupture basin kit number C142	Rupture basin switch kit number C158
DFAB, DFAC	0415-0731	415-0696
DFCB, DFCC, DFCE, DFBF	0415-0683	415-0696
DFEB, DFEC, DFED	0415-0681	415-0696
DQAD, DQAE, DQAF	0415-0731	415-0696

Certification



ISO9001 - This product was designed and manufactured in facilities certified to ISO9001.



UL listed - Listed to UL (File # MH 16055).

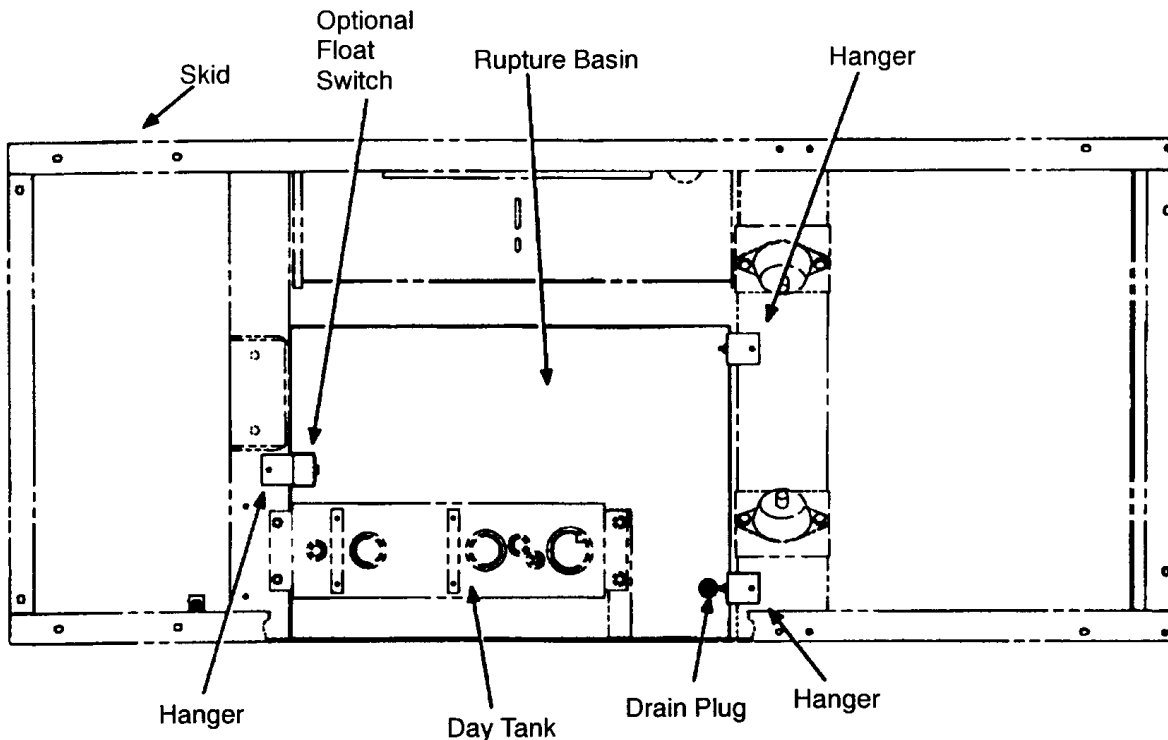


Figure 3 - Typical rupture basin installation

Americas

1400 73rd Avenue N.E.
Minneapolis, MN 55432 USA
Phone: 763 574 5000
Fax: 763 574 5298

Europe, CIS, Middle East and Africa

Manston Park Columbus Ave.
Manston Ramsgate
Kent CT 12 5BF United Kingdom
Phone 44 1843 255000
Fax 44 1843 255902

Asia Pacific

10 Toh Guan Road #07-01
TT International Tradepark
Singapore 608838
Phone 65 6417 2388
Fax 65 6417 2399

Warning: Back feed to a utility system can cause electrocution and/or property damage. Do not connect generator sets to any building electrical system except through an approved device or after building main switch is open.

Warning: For professional use only. Must be installed by a qualified service technician. Improper installation presents hazards of electrical shock and improper operation, resulting in severe personal injury and/or property damage.

Our energy working for you.™

www.cumminspower.com